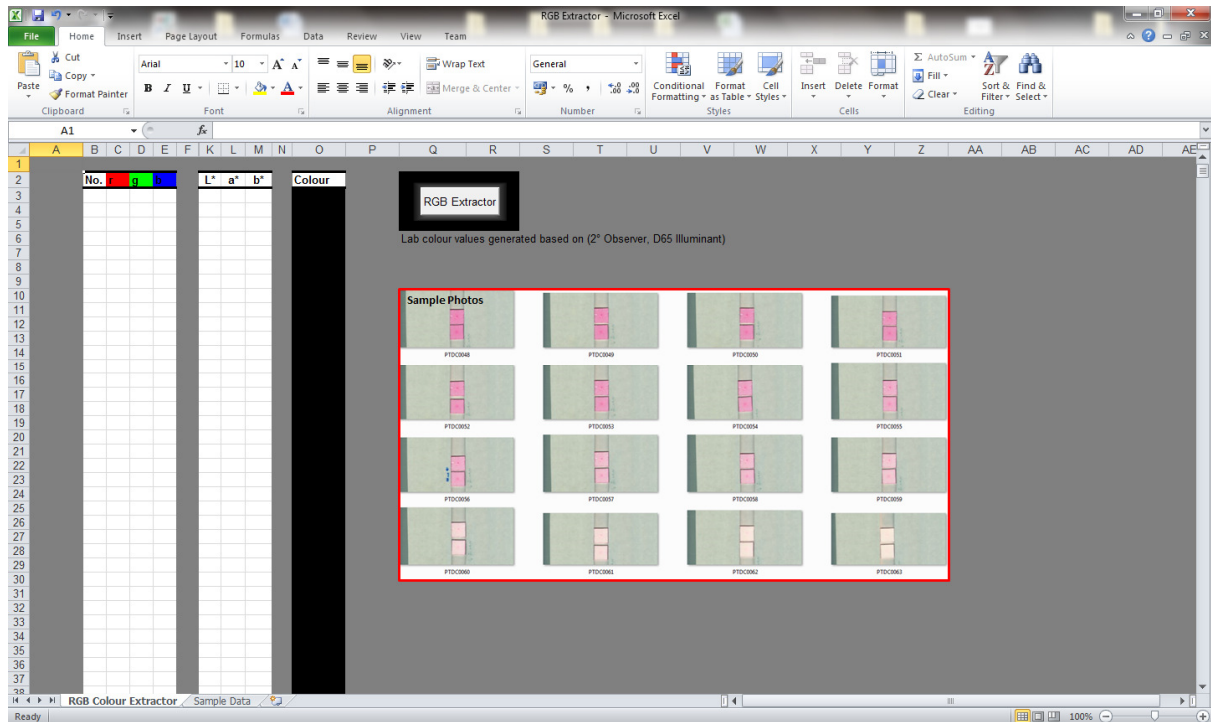
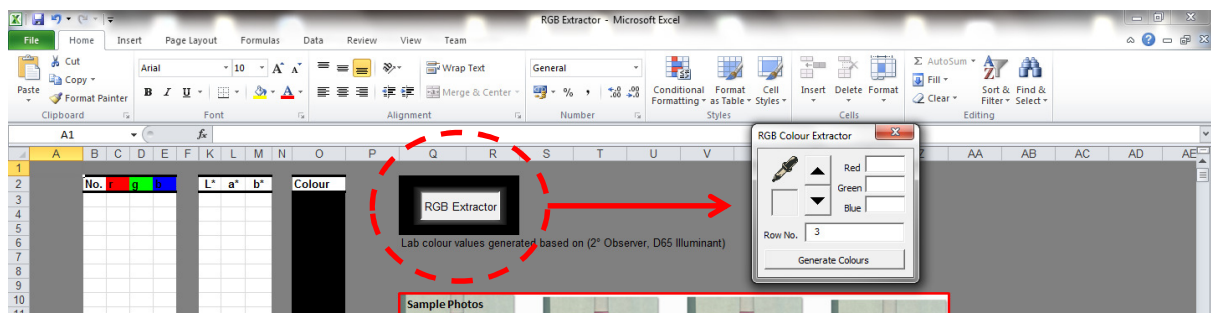


RGB Extractor Guide

1. Open the folder containing your digital images, view as large thumbnails, and take a print-screen.
2. Open the macro enabled file “RGB Extractor.xlsm”.
3. Paste the print-screen in the grey area of the spreadsheet and crop and resize accordingly to fit on screen. [A sample set of photos is provided in the “Sample Data” worksheet]

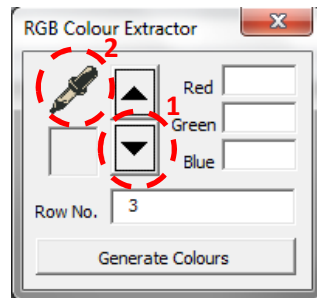


4. Click the “RGB Extractor” button to reveal the following window, and drag it away from the pasted images.

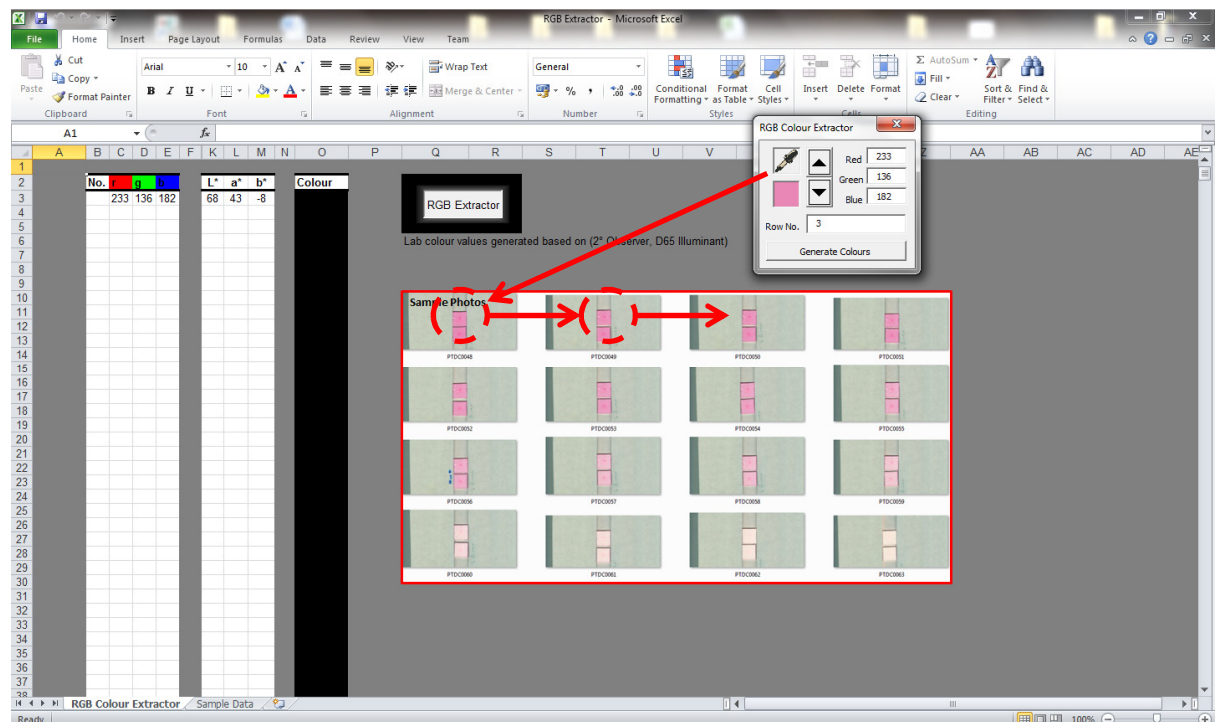


5. Click the down arrow to highlight the arrow buttons, then click and hold the eyedropper icon.

NOTE: In order to record the RGB values quickly, the left mouse button must be held until all images have been processed.



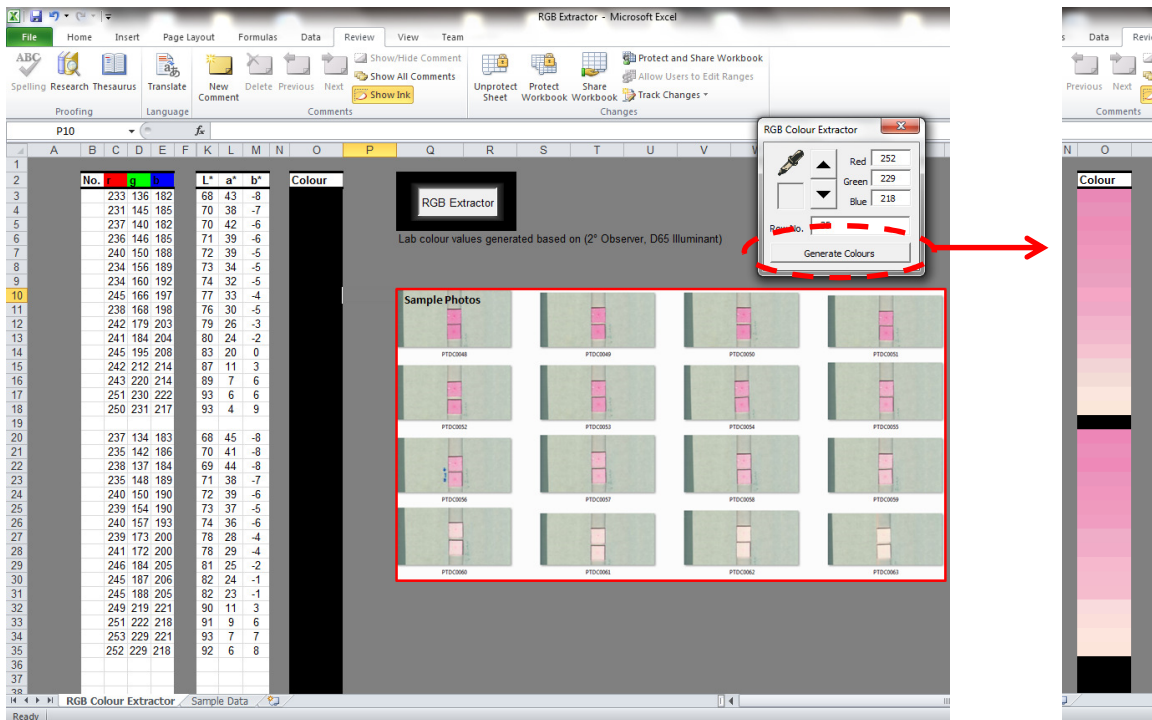
6. With the left mouse button still pressed, drag the cursor over the first image you want to extract the RGB value from. When in place, press the up key on the keyboard. [The RGB values will be listed in columns C, D, and E]



7. Move to the 2nd image and press the up key again. [The up key tells the macro to record the next RGB value on the next row of the spreadsheet]
8. Repeat until the end of the images have been reached and release the left mouse button.

NOTE: If the left mouse button is released before the end of the images is reached, simply re-click the eyedropper icon.

9. The “Generate Colours” button allows a preview of all the colours extracted from the images, to be generated in column O. [This feature only works in Excel® versions 2007 and newer]



10. Close the “RGB Colour Extractor” window

11. Enter the irradiation times in column B

12. The data is now ready to plot to show the change in the 3 RGB colour values as a function of irradiation time.

